

**RIGHT WIDTH™ ELONGATED
RIGHT HEIGHT™ FLUSH VALVE TOILET**
VITREOUS CHINA

**RIGHT WIDTH™ ELONGATED RIGHT HEIGHT™
FLUSH VALVE TOILET**

- Vitreous china
- Low-consumption (6.0 Lpf/1.6 gpf)
- Elongated bowl
- 17" rim height for accessible applications
- Fully glazed 2" trapway
- Wider footprint for excellent retrofit installation
- Elongated, Open Front, Right Width™ seat (less toilet seat lid) included
- 10" Rough-in
- 1-1/2" inlet spud
- 2 bolt caps
- Load tested to 2,000 lbs. - Perfect for Bariatric Applicatons

- 3641.016** Top spud
- 3641.001** Same as above, Universal Bowl

Nominal Dimensions:
737 or 787 x 419 x 432mm
(29" or 31" x 16-1/2" x 17")

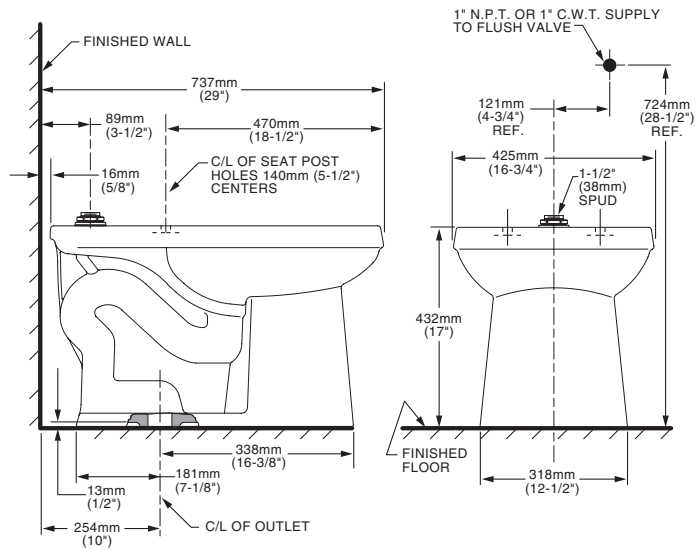
Recommended working pressure – between 30 psi at valve when flushing and 80 psi static

Fixture and Seat only, flush valve by others

**Compliance Certifications -
Meets or Exceeds the Following Specifications:**

- ASME A112.19.2-2008 / CSA B45.1-08 for Vitreous China Fixtures

- To Be Specified:**
- Color: White
 - Flush Valve:



NOTES:
THIS TOILET IS DESIGNED TO ROUGH-IN AT A MINIMUM DIMENSION OF 254MM (10") FROM FINISHED WALL TO C/L OF OUTLET. TO COMPLY WITH AREA CODE GOVERNING THE HEIGHT OF VACUUM BREAKER ON FLUSH VALVE, THE PLUMBER MUST VERIFY DIMENSIONS SHOWN FOR SUPPLY ROUGHING. FLUSH VALVE NOT INCLUDED AND MUST BE ORDERED SEPARATELY.

IMPORTANT: Dimensions of fixtures are nominal and may vary within the range of tolerances established by ANSI Standard A112.19.2. These measurements are subject to change or cancellation. No responsibility is assumed for use of superseded or voided pages.



MEETS THE AMERICANS WITH DISABILITIES ACT GUIDELINES AND ANSI A117.1 REQUIREMENTS FOR ACCESSIBLE AND USABLE BUILDING FACILITIES - CHECK LOCAL CODES.